

Product specifications

Papercooler

The Papercooler is a sustainable alternative to the EPS cooler, especially suitable for dry ice applications. With its unique patented* paper insulation system, the Papercooler delivers similar insulating and protective performance compared to the EPS box. It is the first shipping packaging solution of its kind to deliver this performance, marking a huge sustainable step forward.

Elements

1. Outer box bottom FEFCO 0212 Lid FEFCO 0713
2. Isolation panel A Top
3. Isolation panel B Side (2x)



Outer Dimensions (mm)

Size	L	W	H
Mini	230	230	232
Small	273	227	232

Inner Dimensions (mm)

Size	L	W	H
Mini	157	157	157
Small	210	157	170

Volume (liters) & Weight (grammage)

Size	Volume	Total weight
Mini	3,9	660
Small	5,6	768

Materials

Outer box

84% recycled cardboard

Cushion pads

Paper sheets

Why using the papercooler

- Entirely recyclable
- Biodegradable
- No separate EPS return flow
- Meets the requirements for conditioned transport while maintaining product quality
- Less transport and storage volume
- Flexible in customization
- Wide range of printing options

Recycle instructions

- The Papercooler is made from (recycled) paper and cardboard
- The entire packaging is 100% recyclable
- Fully recyclable with the paper recycling stream

Want to know more?

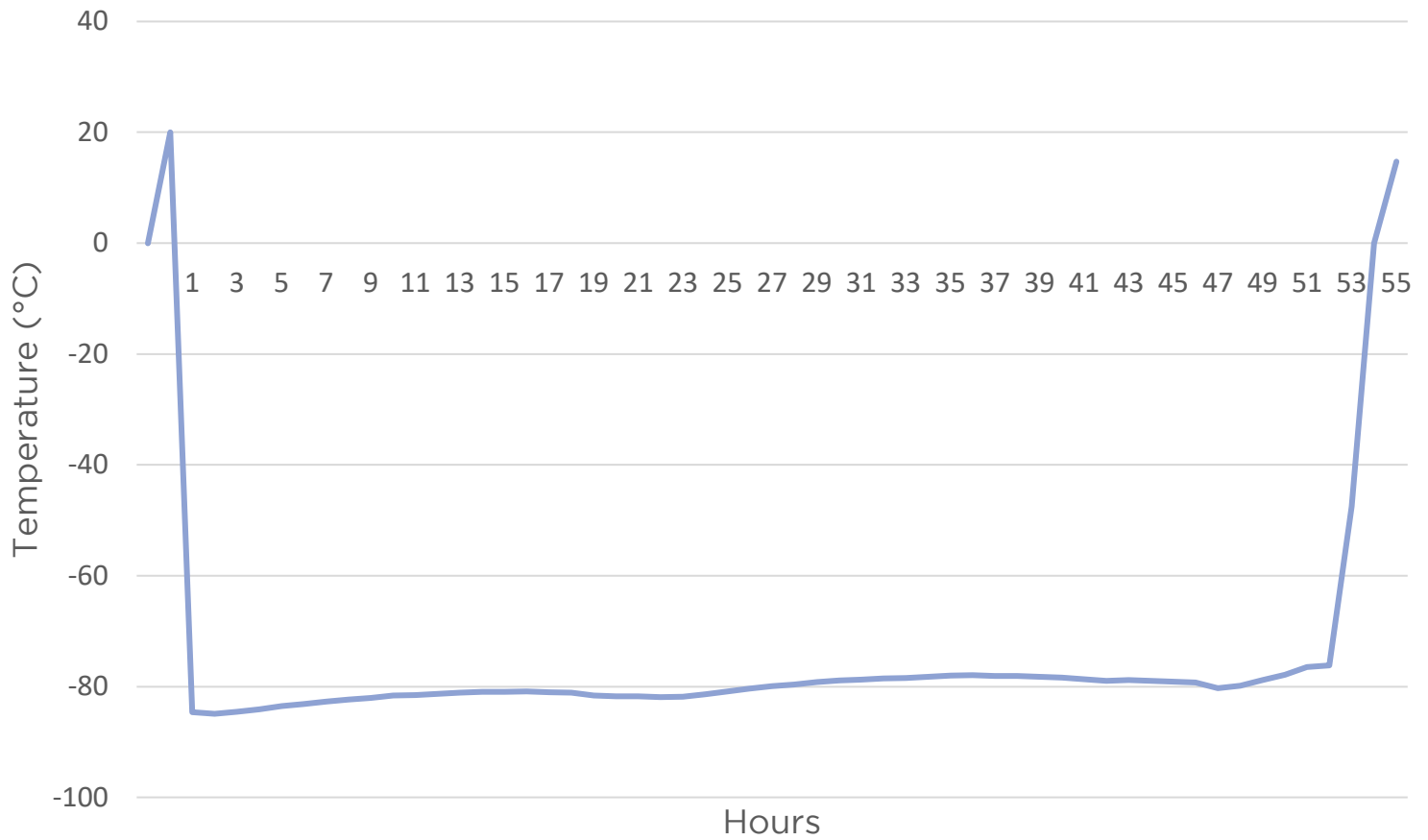
For more information call or email +31 (0)78 652 4060 | info@bvp.nl.
Or visit our website. We are happy to answer your questions.



Test Report

Papercooler Small Dry-Ice 3kg

Date 04-09-2023



The test was carried out at an ambient temperature of approximately 19 degrees.



do not underestimate